

Industrial Building Sublease-Greenville, NC

3540 Diamond Dr, Greenville, NC 27834



Listing ID:	29997891
Status:	Active
Property Type:	Industrial For Lease
Industrial Type:	Free-Standing, Industrial-Business Park
Contiguous Space:	21,800 SF
Total Available:	21,800 SF
Lease Rate:	\$6.50 PSF (Annual)
Base Monthly Rent:	\$11,808
Lease Type:	Modified Gross
Loading:	3 Doors
Ceiling:	22 ft.
Office SF:	1,800 SF



Overview/Comments

Great Industrial Space For Sublease! The space is 21,800 square feet and sits on 3.74 acres.

The property highlights include: 1,800 square feet of office space, 20,000 square feet of warehouse space, a 1.3 acre fenced in lot, 3 bathrooms, 5 offices, a showroom/break room, 3 drive in doors, 22 foot sidewall height, and metal halide lighting.

More Information Online

<https://ovtgroup.catylist.com//listing/29997891>



QR Code

Scan this image with your mobile device:

General Information

Tax ID/APN:	62651	Zoning:	IU
Industrial Type:	Free-Standing, Industrial-Business Park, Manufacturing, Light Industrial, Research & Development, Warehouse/Distribution	Gross Building Area:	21,800 SF

Available Space

Suite/Unit Number:	1	Conference Rooms:	1
Space Available:	21,800 SF	Offices:	5
Minimum Divisible:	21,800 SF	Office SF:	1,800 SF
Maximum Contiguous:	21,800 SF	Kitchen/Breakroom:	Yes
Space Description:	21,800 square feet. 1,800 (office) 20,000 (warehouse)	Parking Spaces:	19
Space Type:	Sublet	Loading Doors:	3
Date Available:	03/01/2016	Ceiling Height:	22
Lease Rate:	\$6.50 PSF (Annual)	Clear Height:	22
Lease Type:	Modified Gross	Eave Height:	22

Area & Location

Property Located Between:	Diamond Dr and Hwy 264.
Highway Access:	1/2 mile off NC Hwy 264, 3 miles from NC Hwy 13
Airports:	3.7 miles from Pitt-Greenville Airport

Building Related

Tenancy:	Single Tenant	Office Space SF:	1,800 SF
Total Number of Buildings:	1	Year Built:	2001
Number of Stories:	1	Roof Type:	Flat

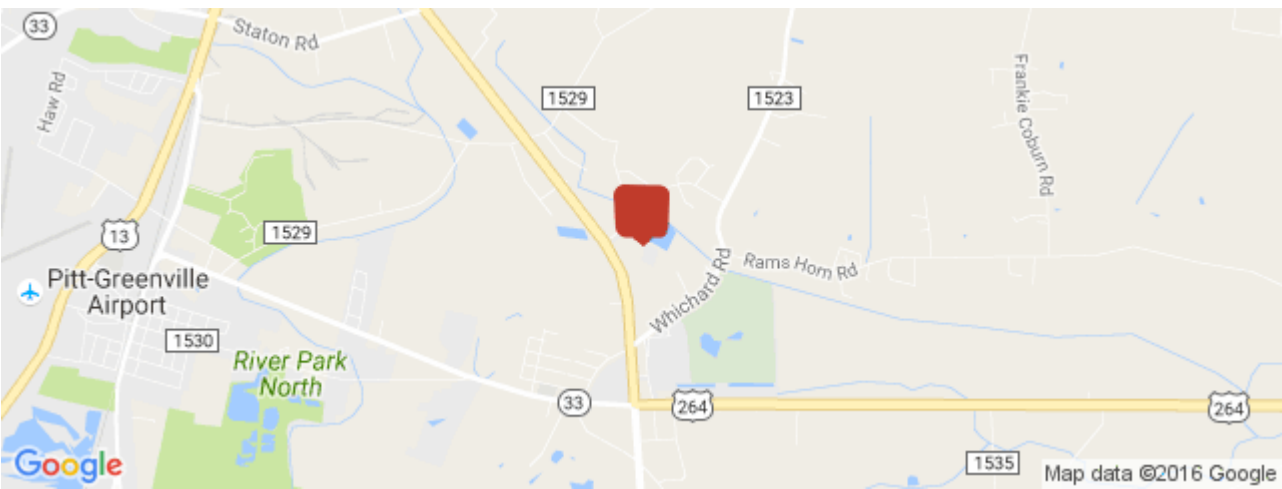
Construction/Siding:	Steel Frame	Amps:	200
Parking Type:	Surface	X-Phase:	3
Total Parking Spaces:	19	Heat Type:	Propane
Passenger Elevators:	0	Air Conditioning:	Engineered System
Freight Elevators:	0	Lighting:	Metal Halide
Sprinklers:	None	Internet Access:	Cable, DSL, Satellite

Land Related

Zoning Description:	IU
Water Service:	Municipal
Sewer Type:	Septic

Location

Address:	3540 Diamond Dr, Greenville, NC 27834
County:	Pitt
MSA:	Greenville



Property Images



IMG_0734



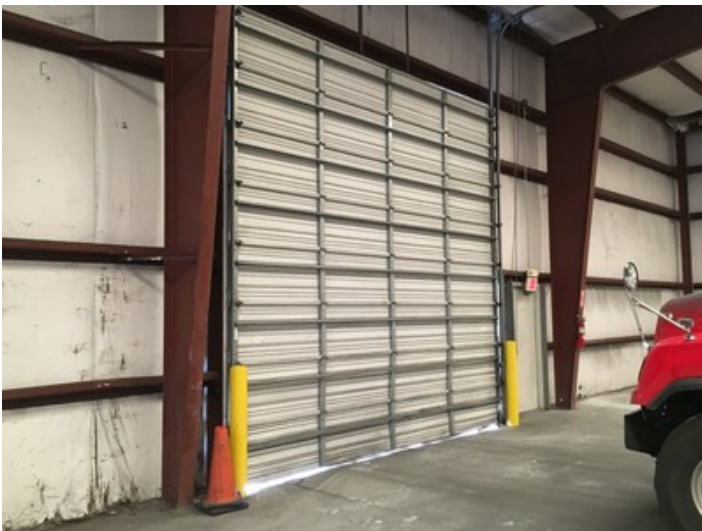
IMG_0743



IMG_0742



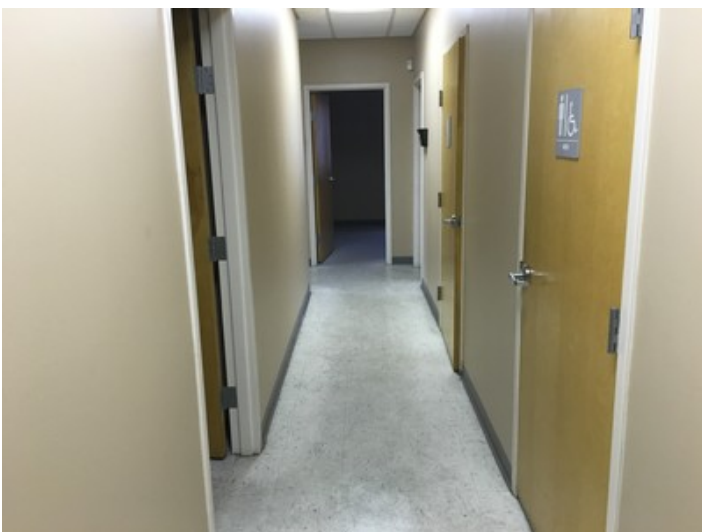
IMG_0758



IMG_0739



IMG_0759



IMG_0744



IMG_0760



IMG_0761



IMG_0737



IMG_0764



IMG_0763

Property Contacts



Michael Overton

The Overton Group, LLC
252-355-7006 [0]
michael@overtongroup.net